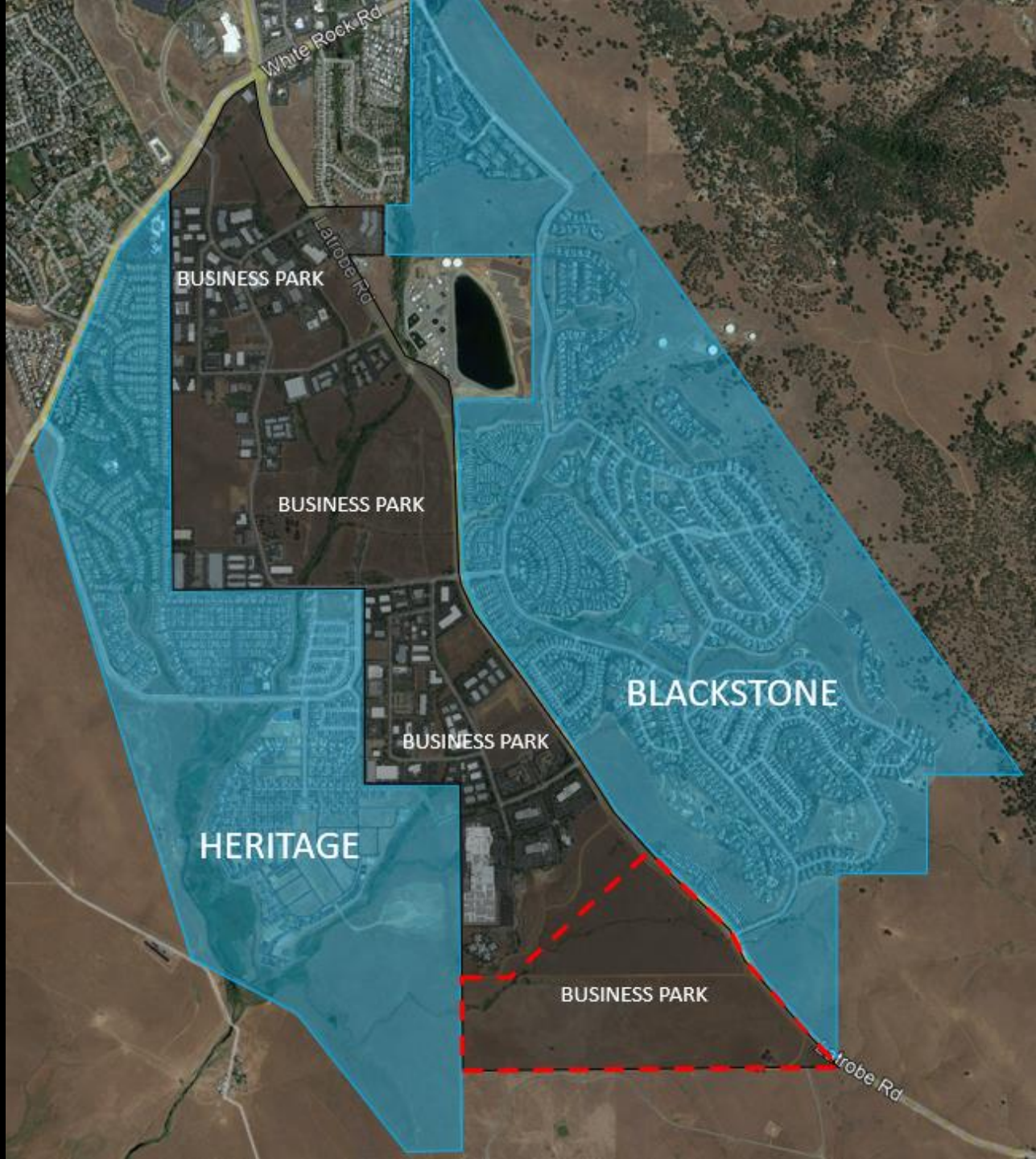
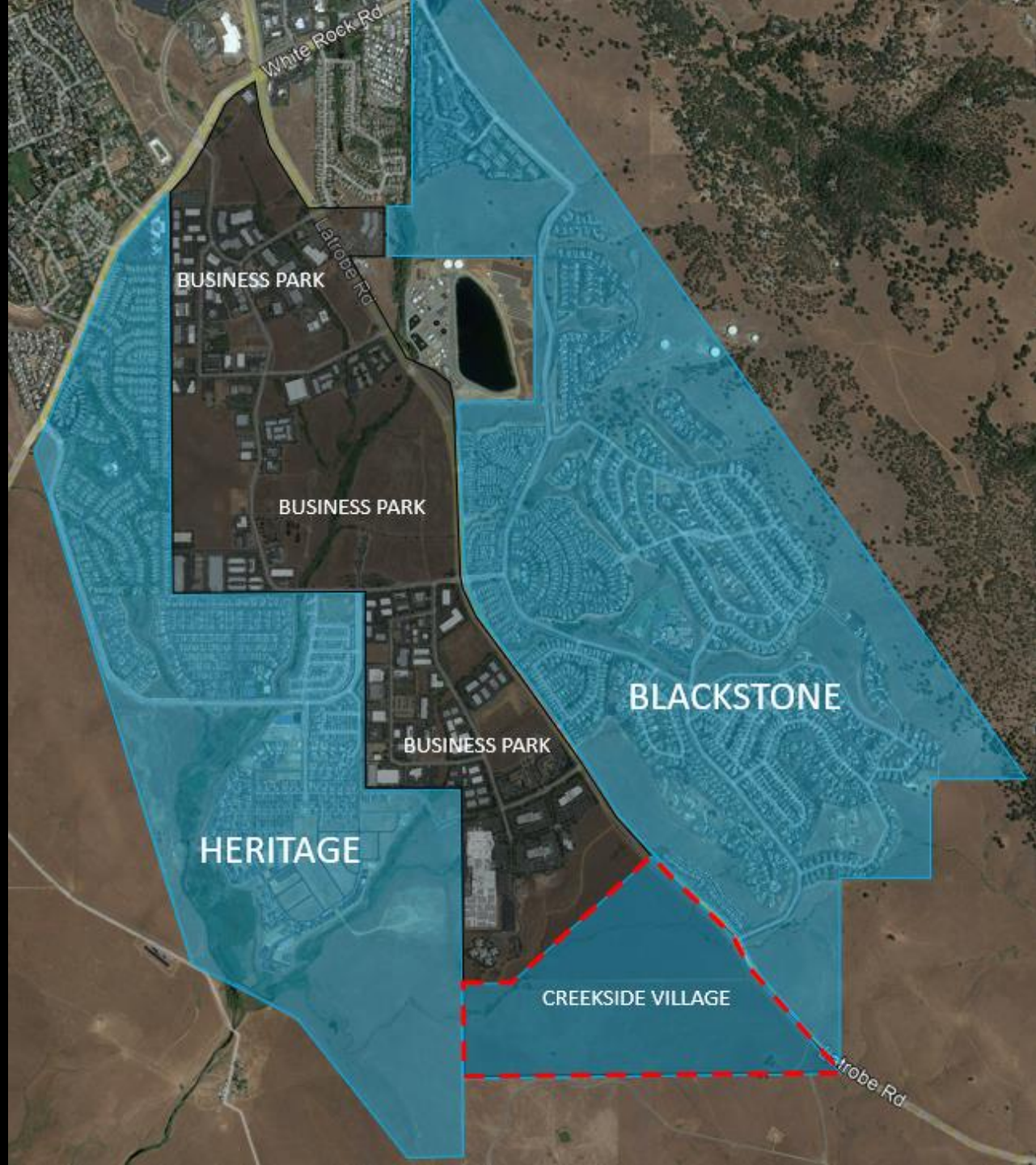


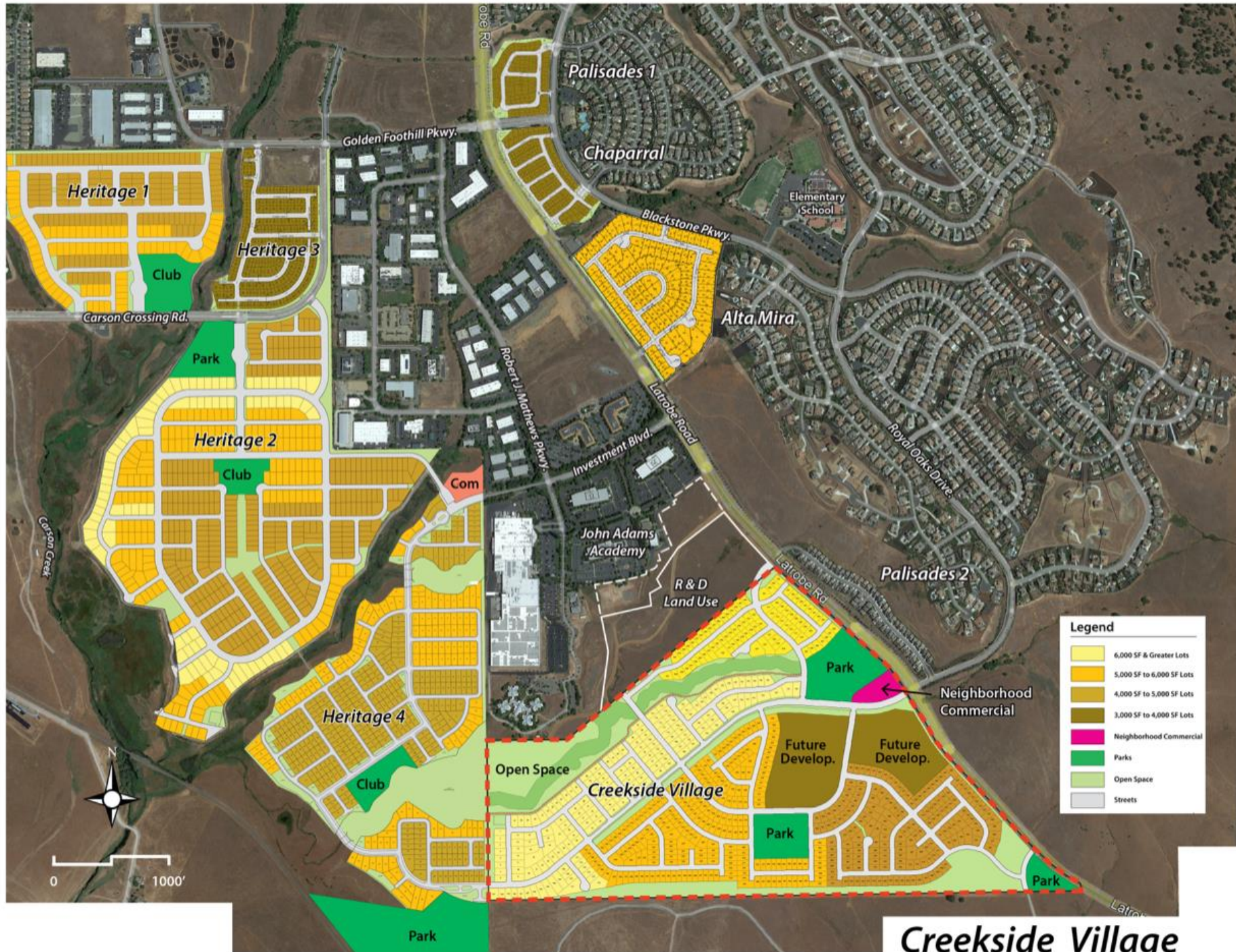


CREEKSIDE
— VILLAGE —

By: Winn Ridge Investments, LLC







Creekside Village



Creekside Village
Winn Communities

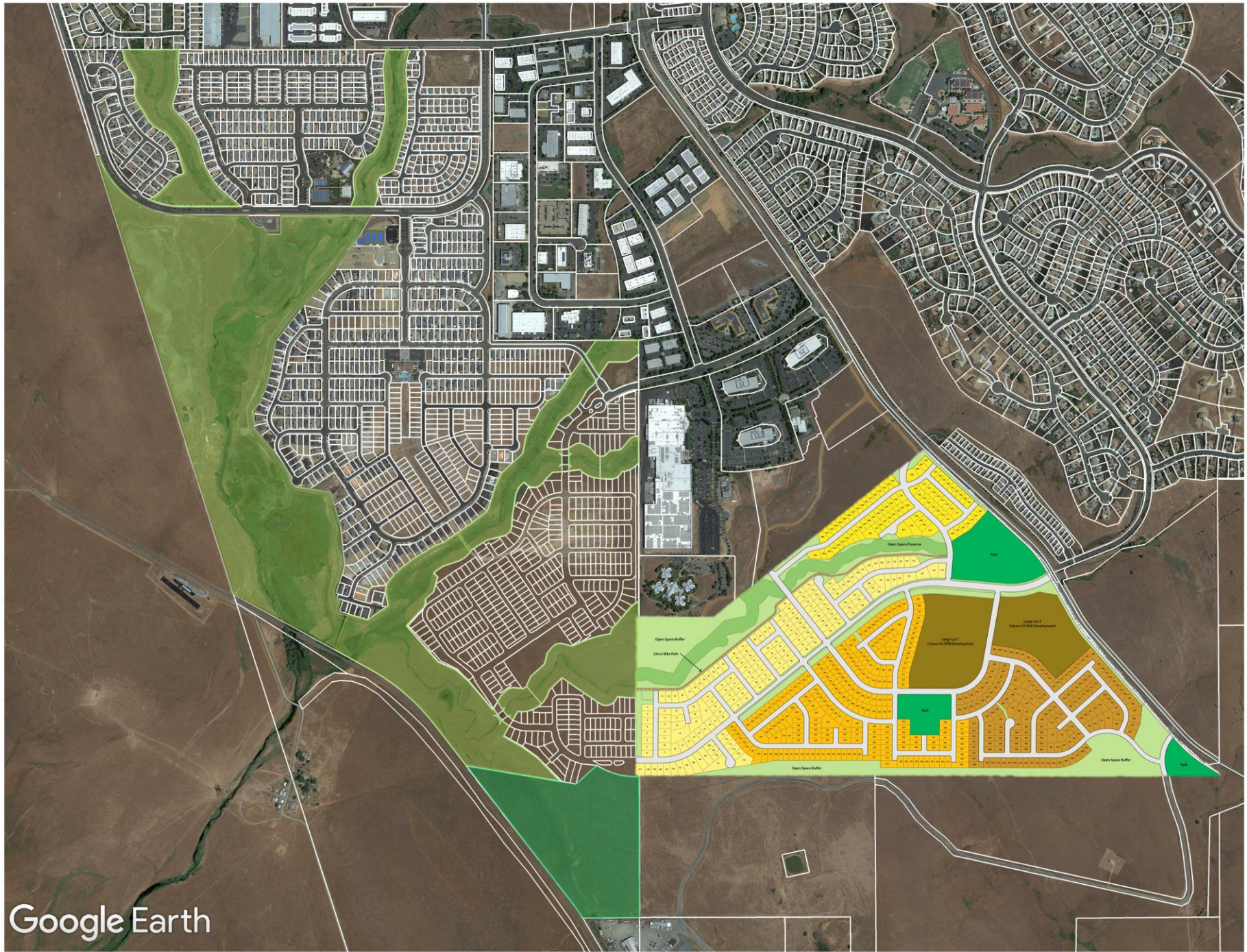
Illustrative SitePlan

September 2023 - Torrence Planning



CREEKSIDE
VILLAGE







LEGEND

- A. COMMERCIAL RETAIL SITE
- B. OPEN TURF FIELD - Flag Football | U8 Soccer 240' x 180'
- C. INTERMITTENT STREAM WITH ADDED BOULDERS
- D. PEDESTRIAN BRIDGE
- E. SMALL PICNIC SHELTERS WITH BBQ AND TABLE
- F. EVERGREEN SCREEN
- G. TREE ALLEE IN D.G WITH (2) BOCCE COURTS
- H. CONCRETE PATHS 8'0" WIDTH
- I. PASSIVE TURF AREA
- J. TOT LOT EQUIPMENT
- K. ADVENTURE PLAY ELEMENTS
- L. FULL COURT OR (2) 1/2 COURT BASKETBALL
- M. (2) SAND VOLLEYBALL COURTS
- N. MOUNDED BUFFER ADJACENT TO LATROBE RD.
- O. LARGE SPECIMEN SYCAMORE TREE





LEGEND

- A. COMMERCIAL RETAIL SITE
- B. OPEN TURF FIELD - Flag Football | U8 Soccer 240' x 180'
- C. INTERMITTENT STREAM WITH ADDED BOULDERS
- D. PEDESTRIAN BRIDGE
- E. SMALL PICNIC SHELTERS WITH BBQ AND TABLE
- F. EVERGREEN SCREEN
- G. TREE ALLEE IN D.G WITH (2) BOCCE COURTS
- H. CONCRETE PATHS 8'0" WIDTH
- I. PASSIVE TURF AREA
- J. TOT LOT EQUIPMENT
- K. ADVENTURE PLAY ELEMENTS
- L. FULL COURT OR (2) 1/2 COURT BASKETBALL
- M. (2) SAND VOLLEYBALL COURTS
- N. MOUNDED BUFFER ADJACENT TO LATROBE RD.
- O. LARGE SPECIMEN SYCAMORE TREE

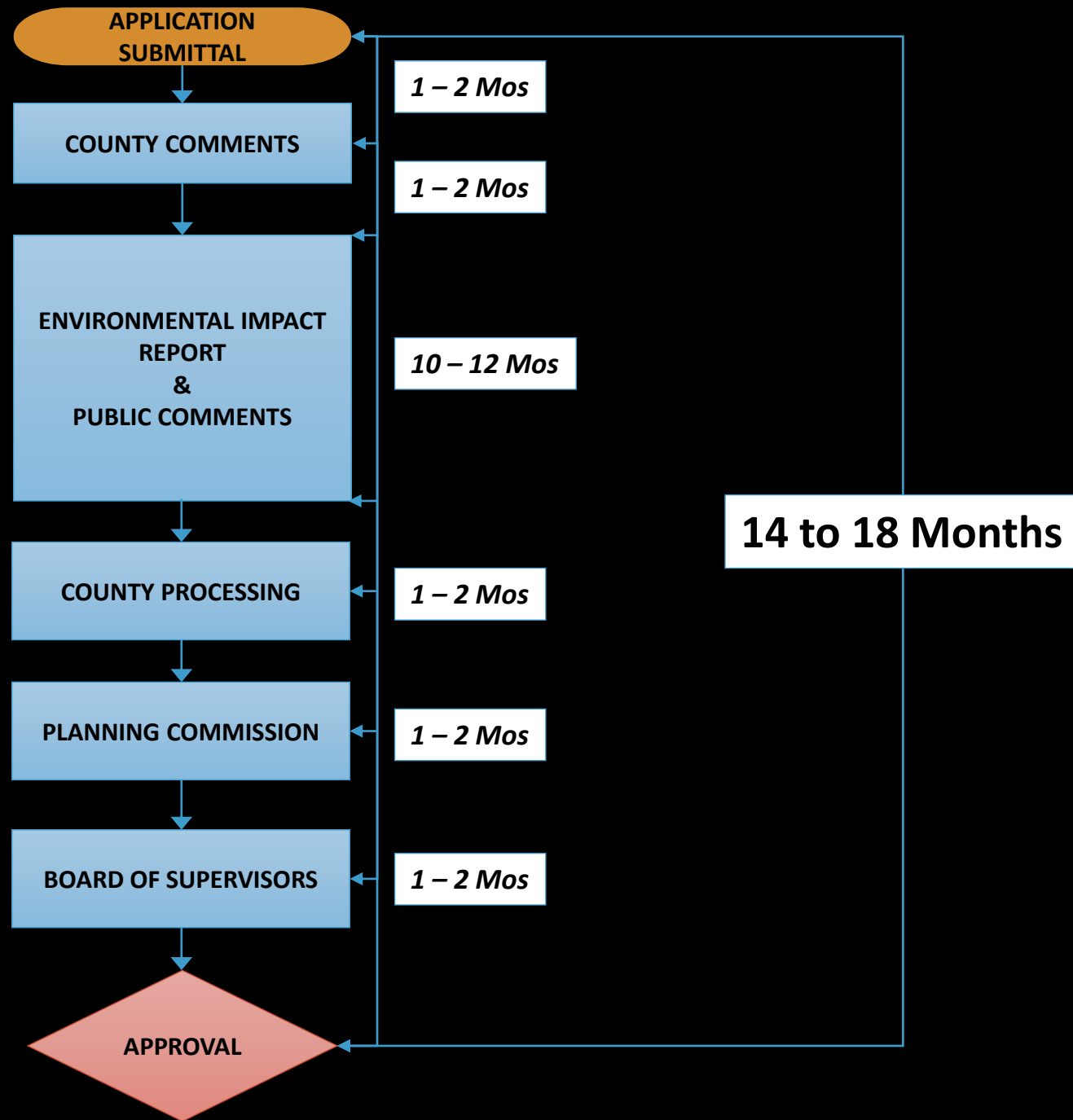


LEGEND

- A. SMALL GRASS OR MEADOW RELIEF AREA
- B. ACCESS PATH TO TRAIL
- C. BENCH
- D. EXISTING INTERMITTENT DRAINAGE SWALE TO REMAIN
- E. CLASS I TRAIL - SOUTH OF INTERMITTENT DRAINAGE
- F. ROAD CROSSING OVER INTERMITTENT DRAINAGE
- G. FILL SLOPES - NATIVE HYDROSEEDED MIX
- H. NATIVE VALLEY OAK PLANTING
- I. 72" OPEN METAL FENCING @ LOTS ADJACENT TO O/S
- J. SMALL OVERLOOK WITH BENCH AND SEATWALL
- K. LOT K PARK

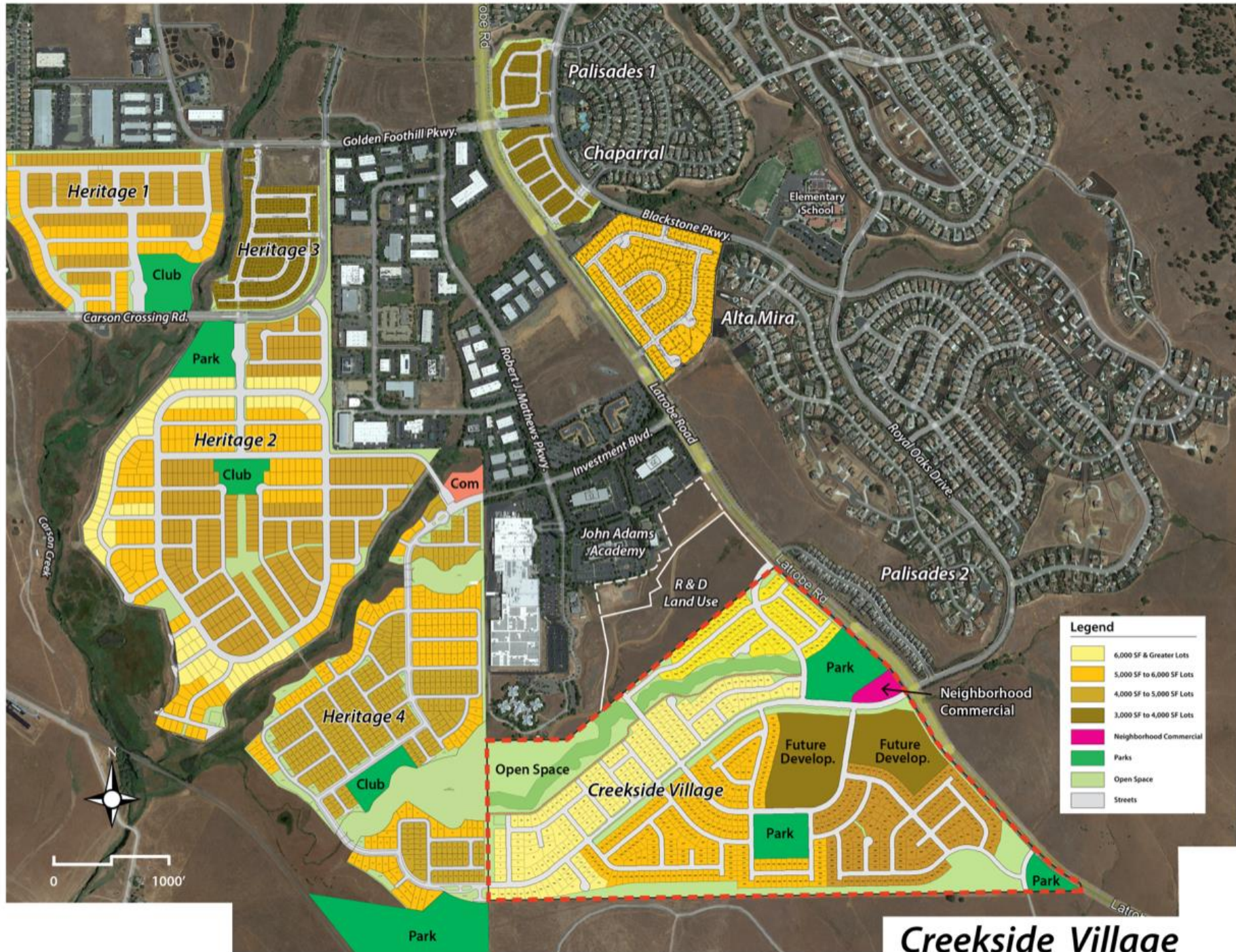








QUESTIONS?



Creekside Village

