

Pioneer Community Energy It's Your Power, Your Choice

November 10, 2021

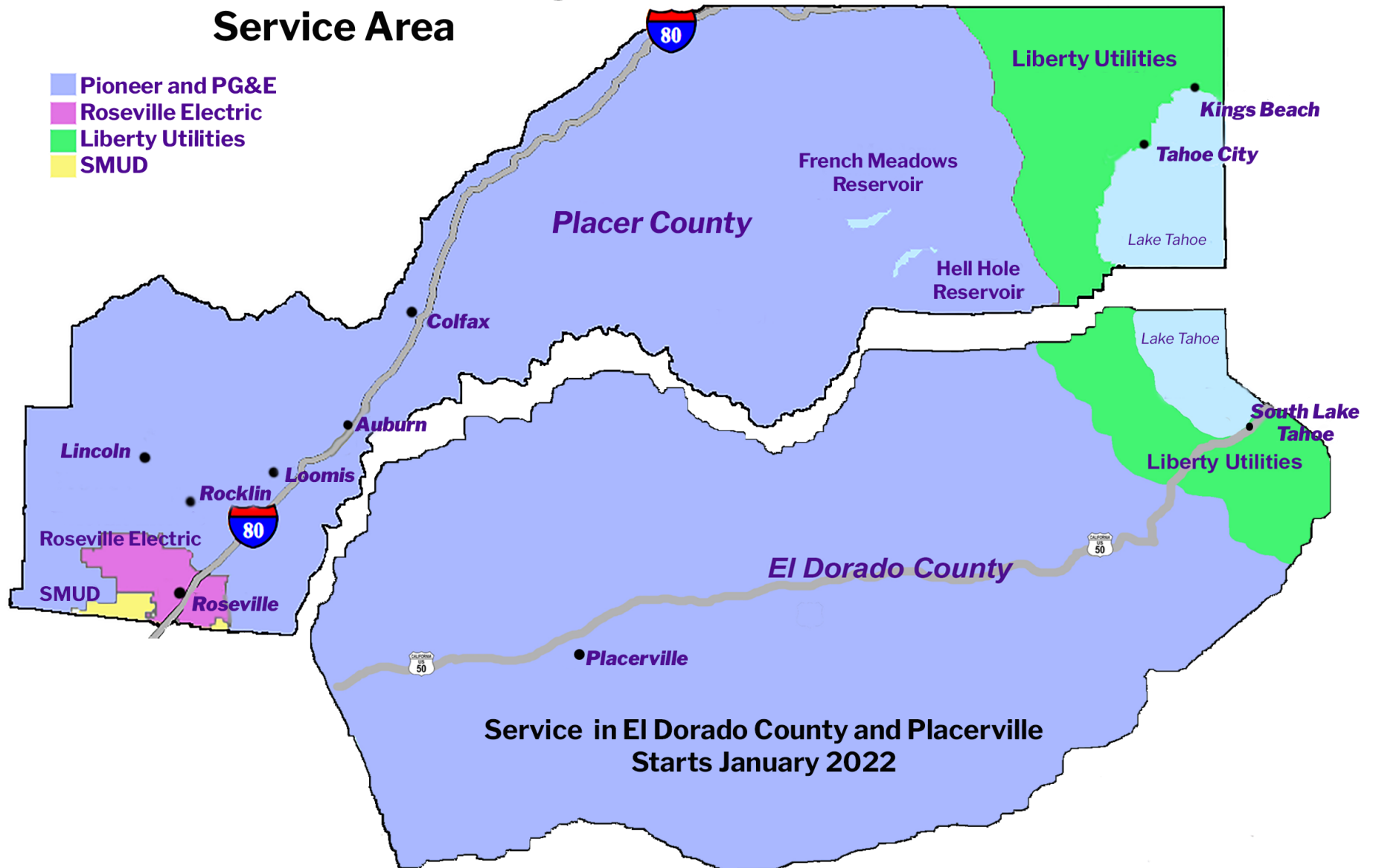


What is a Community Choice Aggregator



- In 2002 the state authorized local governments to form agencies to purchase power on behalf of constituents
 - 2010 – 1 CCA
 - 2021 – 24 CCAs
- Authority for power purchasing, programs, rate setting
- Led by a Board of Directors
 - Made up of your locally elected officials
- Must comply with requirements of:
 - California Public Utilities Commission
 - California Energy Commission
 - California Air Resources Board

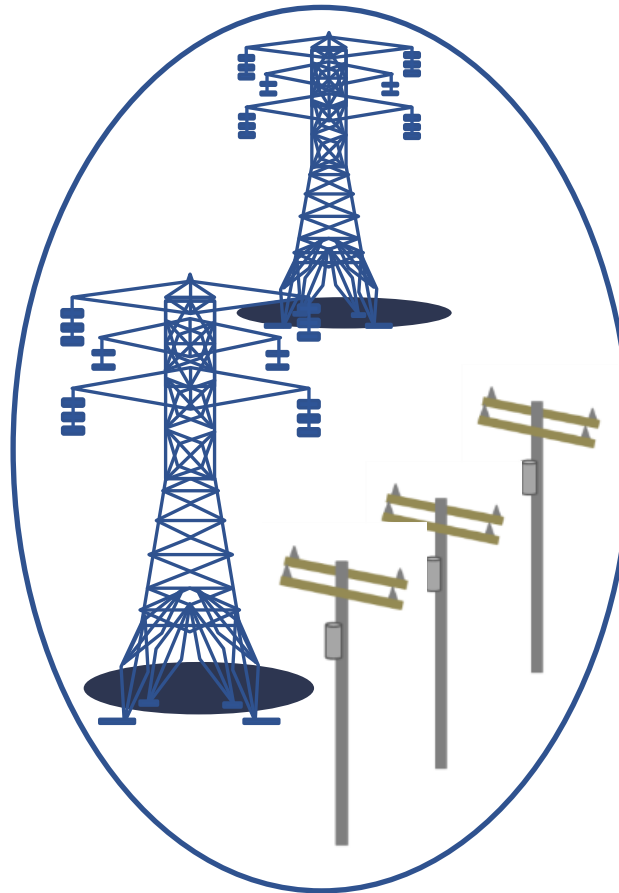
Pioneer Community Energy Service Area



How Does It Work



Pioneer Community
Energy Supplies
Electricity



PG&E Delivers
Electricity and Maintains
the Lines and Poles



You Use the
Electricity

Pioneer Provides a Choice in Electric Generation Providers

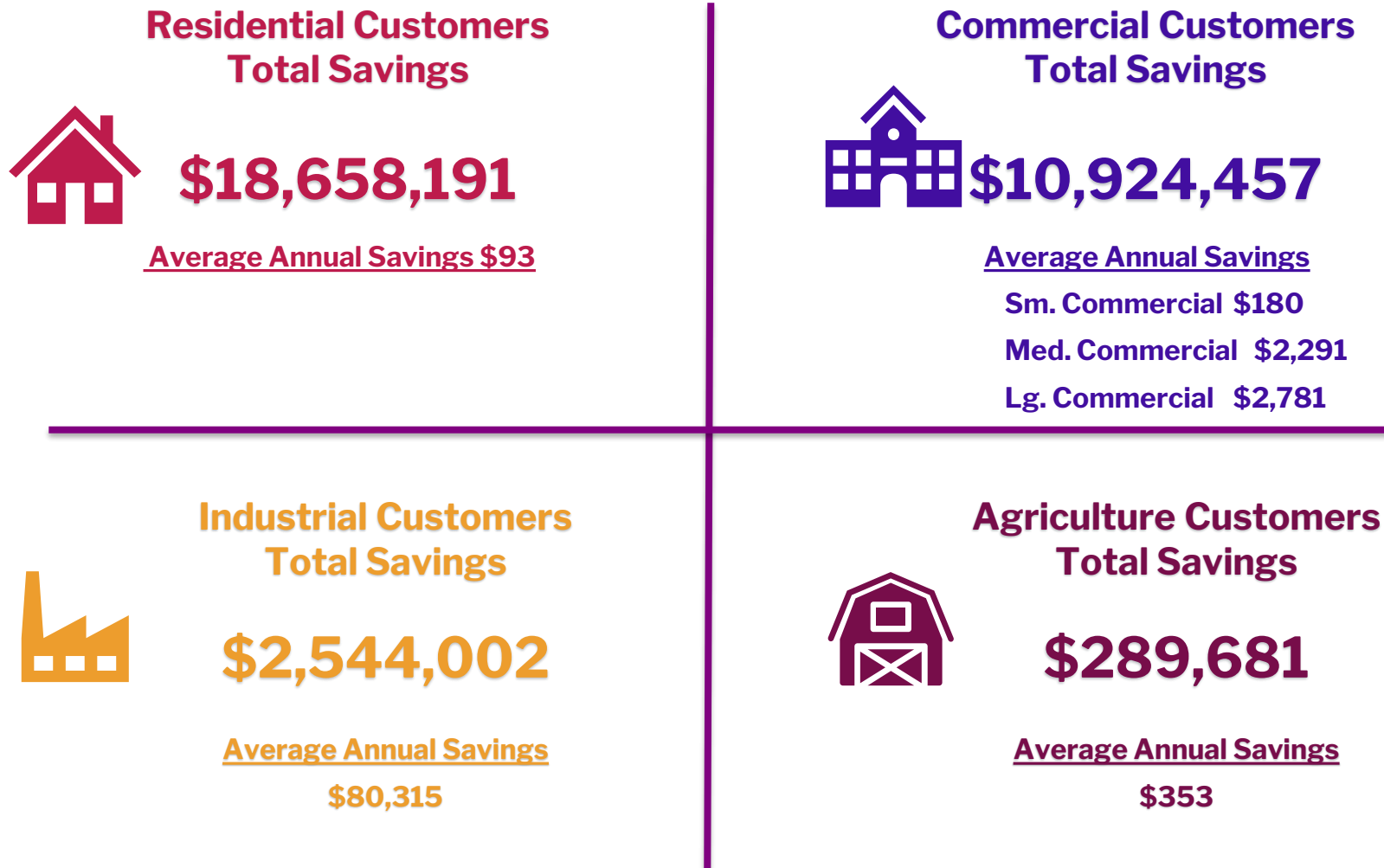
- We are a community-owned provider of electricity
- We power the communities we serve with competitive rates, and a choice in energy options.
- We are a Not-For-Profit partnership including
 - Counties of Placer and El Dorado
 - Cities of Auburn, Colfax, Lincoln, Loomis, Placerville and Rocklin
- We have 160,000 customers, as of January 2022

Pioneer Community Energy Brings El Dorado County and Placerville a Choice in Electric Generation Providers

Pioneer is a community partner providing reliable energy solutions and making a positive impact locally:

- Securing electric generation that support our region's goals
- Providing competitive and stable rates
- Contributing to local economic stimulus
- Exceeding state mandated greenhouse gas and renewable energy requirements
- Developing customer driven programs – Community Programs Advisory Committee

Pioneer Customers Total Savings Feb 2018 – Nov 2020 **\$32.5 million**

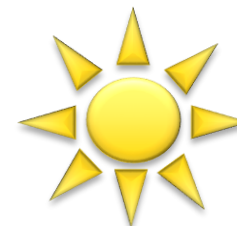


PIONEER **GREEN100**

- Created in response to customer requests
- 100% renewable resources
 - Only such option in El Dorado and Placer Counties
- Completely voluntary – customer choice
- Just over \$0.01 more per kWh
- Average bill difference of less than \$7 per month for a residential customer

Pioneer supports our customers right to choose solar

- Pioneer has nearly 20,000 solar customers
- Pioneer has paid more than \$375,000 to customers since 2020
- Pioneer customers receive \$.005 (1/2 cent) more than PG&E customers for any electric generation (kWh) produced that exceeds consumption



- **Local Spending:** Over \$3.5 million contributed to the local/regional economy in 2020
- **River Fire:** Waived up to \$50,000 for July/August bills for those who lost their homes
- **AB 843:** Sponsored and passed funding bill for biomass facilities
- **Mobile Home Park:** Legislation to ensure MHP residents receive CCA benefits and savings
- **Ag Customers:** Deferred Time of Use for Ag customers saving \$465 to \$14,000 each
- **PSPS:** Advocate at CPUC increased accountability, reporting, impact assessment and mitigation
- **Arrearage Management Plan:** Debt forgiveness program for utility debt accrued during COVID

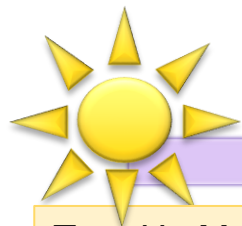
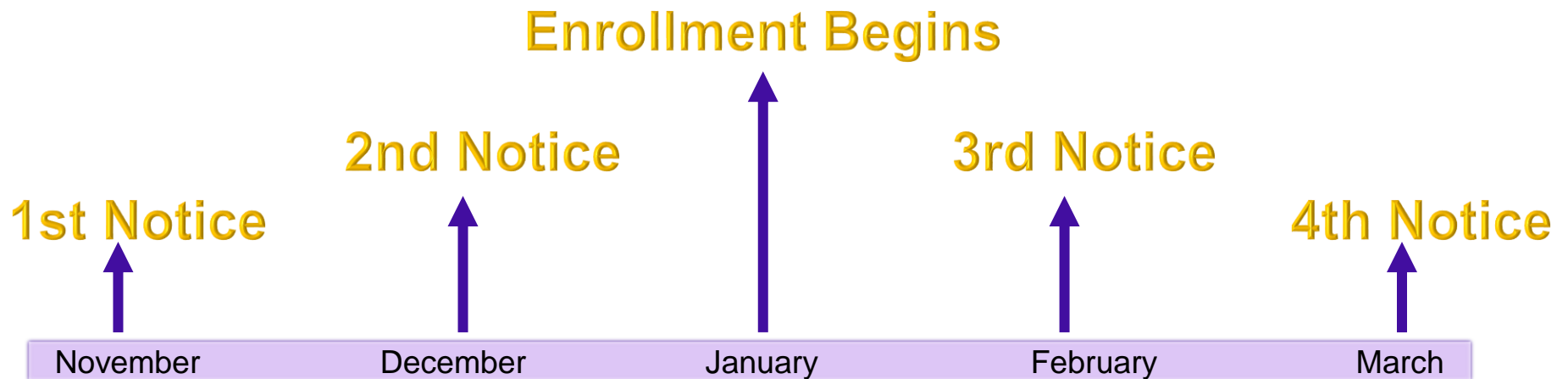
How Does Enrollment in Pioneer Work?



- State law requires all eligible customers be auto enrolled for Pioneer Community Energy service
- Customers choose to participate or not
 - Stay with Pioneer – No Action Necessary
 - Return to PG&E – Opt out via phone or online
- Customers can make a choice at any time starting 60 days before enrollment and any time after that
- Upon opt out PG&E requires a one-year commitment for returning customers

The Choice is Yours!

Enrollment Timeline



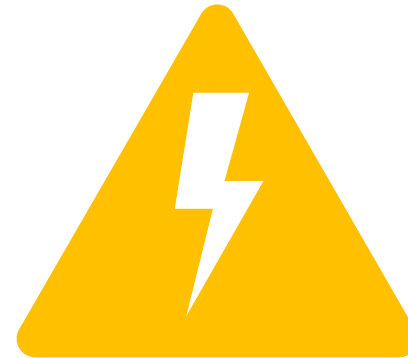
Solar (Net Energy Metering) customers enroll close to their true up month

True Up Month	Jan/Feb	March/April	May/June	July/Aug	Sept/Oct	Nov/Dec
1 st Notice	November	January	March	May	July	September
Enrollment Month	January	March	May	July	September	December

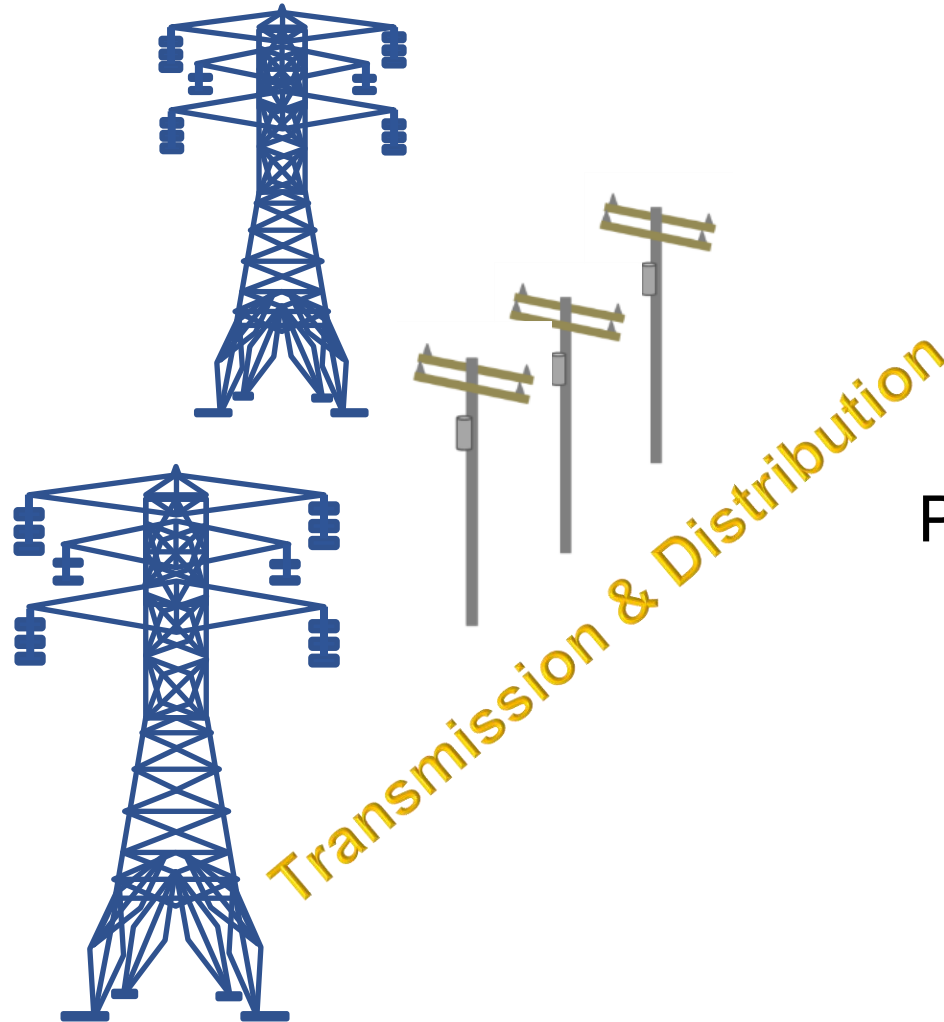
Special Note: Solar customers can enroll before their true-up date by calling Pioneer.

How Does Billing Work?

Two parts to all electric bills:



Electricity (Electric Generation)



Pioneer Customers receive:

- Transmission & Distribution Services from PG&E
- Electricity (kWh) from Pioneer Community Energy

How Does Billing Work?



Customers receive 1 bill and make 1 payment to Pioneer and PG&E costs

PG&E ENERGY STATEMENT
www.pge.com/MyEnergy

Typically Page 3 of Your Bill

Details of PG&E Electric Delivery Charges

01/28/2021 - 02/25/2021 (29 billing days)
Service For:
Service Agreement ID:
Rate Schedule: E1 P Residential Service

01/28/2021 – 02/25/2021	Your Tier Usage	1	2
Tier 1 Allowance	348.00 kWh (29 days x 12.0 kWh/day)		
Tier 1 Usage	348.000000 kWh @ \$0.24986		\$86.95
Tier 2 Usage	240.796000 kWh @ \$0.31443		75.71
Generation Credit			-66.00
Power Charge Indifference Adjustment			25.95
Franchise Fee Surcharge			0.30

Total PG&E Electric Delivery Charges \$122.91

2017 Vintaged Power Charge Indifference Adjustment

PG&E Charge for Electricity is Credited Back to Customer

PG&E's Exit Fee

PG&E ENERGY STATEMENT
www.pge.com/MyEnergy

Typically Page 4 of Your Bill

Details of Pioneer Community Energy Electric Generation Charges

01/28/2021 - 02/25/2021 (29 billing days)
Service For:
Service Agreement ID: ESP Customer Number:

01/28/2021 – 02/25/2021			
Rate Schedule:	E-1		
Generation - Total	588.796000 kWh @ \$0.07719		\$45.45
	Net Charges	45.45	
Energy Commission Surcharge			0.18
Pioneer is committed to protecting customer privacy. See our privacy policy at pioneercommunityenergy.ca.gov/customer-privacy/			

Total Pioneer Community Energy Electric Generation Charges \$45.63

Pioneer's Charge for Electricity

PG&E vs. Pioneer



Generation Rates as of November 3, 2021 - PCIA 2021

Pioneer - E1 Winter Rate

	<u>Energy Usage</u> <u>(kWh)</u>	<u>Rate/kWh</u>	<u>Cost Per</u> <u>Category</u>
Gen Only	605.5	\$ 0.0772	\$ 46.74
PCIA	605.5	\$ 0.0289	\$ 17.48
Total Gen Cost			\$ 64.22
Monthly Savings			\$ 4.92
Percent Savings			7%

PGE - E1 Winter Rate

	<u>Energy</u> <u>Usage (kWh)</u>	<u>Rate/kWh</u>	<u>Cost Per</u> <u>Category</u>
Gen Only	605.5	\$ 0.1142	\$ 69.14
Total Gen Cost			\$ 69.14

Please understand that each analysis is unique to business/residential type, rate class and energy usage. For specific details, please contact Pioneer for a focused rate analysis. Rates used as of 11/9/21.

Why Choose Pioneer

Pioneer

- ★ Local Control
- ★ Not for Profit
- ★ Answers to ratepayers
- ★ Local Staff
- ★ Public Board Meetings
- ★ Stable & Competitive Rates
- ★ \$32.5 million reinvested

PG&E

- Average 940 million Shares
- \$814 Million Net Income*
- Answers to Wall Street
- San Francisco Based
- Private Board Meetings
- Multiple Annual Rate Increases
- Over 5.5 Million Customers

* Net income through June 2021. Net income is gross income minus all costs. Source: https://ycharts.com/companies/PCG/net_income_ttm

(844) 937-7466 Toll Free

CustomerService@PioneerCommunityEnergy.ca.gov

<http://PioneerCommunityEnergy.ca.gov>

Facebook: Pioneer Community Energy

Pioneer rates are for electricity only:

- Pioneer's generation is 30% less than PG&E's

PG&E charges an exit fee

- Exit fee aka Power Charge Indifference Adjustment (PCIA)
- Pioneer works annually to ensure PCIA is fair
- Pioneer is working with other CCAs to get some changes made to improve equity
 - SB 612 – We pay for it, we should get the benefits

For fairness, Pioneer adds PG&E's exit fee to our rate when creating comparisons.

PCIA money goes straight to PG&E