



El Dorado Hills Area Planning Advisory Committee

Wednesday August 11, 2021
7:00PM

EDH Fire Department Station 85 Meeting Room
1050 Wilson Blvd EDH
VIRTUAL MEETING via ZOOM

Attendees via ZOOM or via Phone-in Option will be **MUTED** until
Designated periods when the meeting is opened to Public Comment
on each Agenda Item

To Submit Public Comment click the **RAISE HAND** button in ZOOM, or
press *9 over the phone



1. Call To Order

2021 Chair: John Davey

2021 Vice Chair: John Raslear

2021 Vice Chair Tim White

2021 Secretary Brooke Washburn



2. Adoption of Meeting Agenda

El Dorado Hills Area Planning Advisory Committee

APAC 2021 Officers

John Davey, Chair jdavey@daveygroup.net
John Raslear, Vice Chair jrazzpub@shcglobal.net
Timothy White, Vice Chair twhite@gmail.com
Brooke Washburn, Secretary washburn_bew@yahoo.com

1021 Harvard Way, El Dorado Hills, CA 95762



AGENDA FOR MEETING: August 11, 2021, 7:00 PM

Held at: ***** **SPECIAL LOCATION** *****
El Dorado Hills Fire Department Station 85 Meeting Room
1050 Wilson Blvd El Dorado Hills CA 95762

VIRTUAL MEETING ONLINE:

Join Zoom Meeting <https://us02web.zoom.us/j/84531672523>

PHONE IN OPTION (669) 900-9128 Meeting ID: 845 3167 2523

Meetings are recorded in video format

1. Call to Order
2. Adoption of Meeting Agenda
3. Public Comment
4. Supervisor Communications: Supervisor John Hidahl
5. Guest Speaker: N/A
6. APAC Projects
 - a) **Town and Country Village El Dorado PA21-0013**
Pre-Application to create a mixed use of resort, hotel lodging, first class family gathering wedding reception, conferencing venues, residential, commercial, medical services, and neighborhood serving retail to be named The Town & Country Village El Dorado. The combination of both lodging and reception/family gathering spaces would become the first of its kind for the West Slope neighborhoods and a destination amenity for El Dorado County. Located along the east side of Bass Lake Road and bisected by Country Club Drive.
 - b) **EDH 52 Commercial & Costco CUP-R21-0024 Z17-0004 P17-0007 S17-0017 PD15-0001**
At Silva Valley Parkway & US50. North side - Rezone the property from PD-CR to PD-CC to allow more uses that align with the tenant mix proposed in a shopping center. This will also allow the approval of a mini storage with a CUP. South side – Proposed 151,074 SF Costco Warehouse store on 17 acres, featuring 762 parking stalls – 550 parking stalls main level, 214 parking stalls in a parking structure.
7. Adjournment:

The Next EDH APAC meeting is: **Wednesday September 8, 2021 7PM – Location TO BE ANNOUNCED**



3. Public Comment

On any matter not on the Agenda

Three minutes provided to each speaker

If you are commenting via ZOOM, use the **RAISE HAND button**

If you are commenting via telephone call **press *9**

Commenters:

Please Voluntarily Provide Your Name So We Can Correctly Record Our Meeting Minutes



4. Supervisor Communications

District 1 Supervisor
John Hidahl



5. Guest Speaker

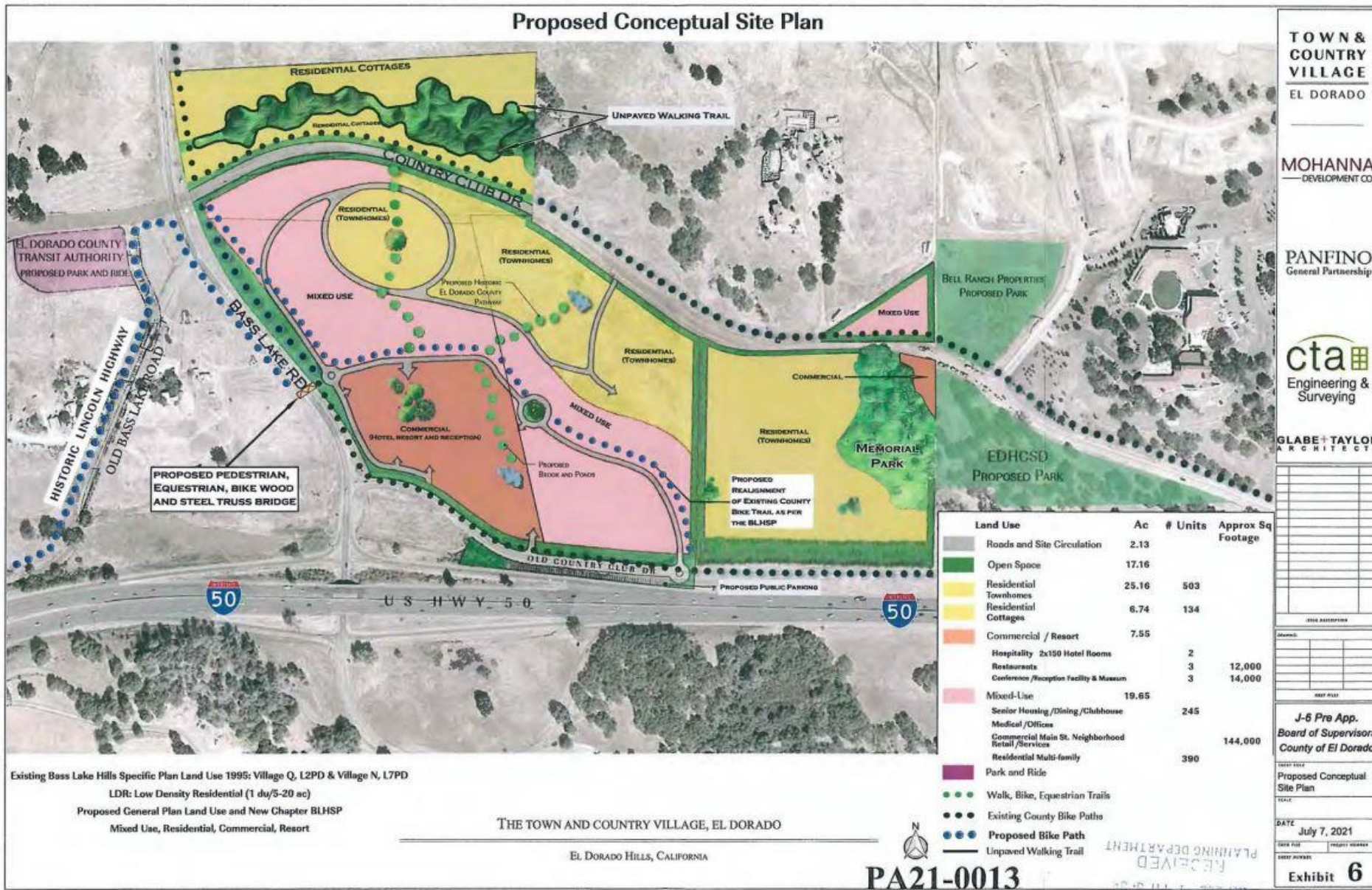
N/A



6. APAC Matters & Projects



Town and Country Village El Dorado PA21-0013





EDH Costco – EDH 52 Commercial Development



Legend

- EDH 52 North
- EDH 52 Costco South

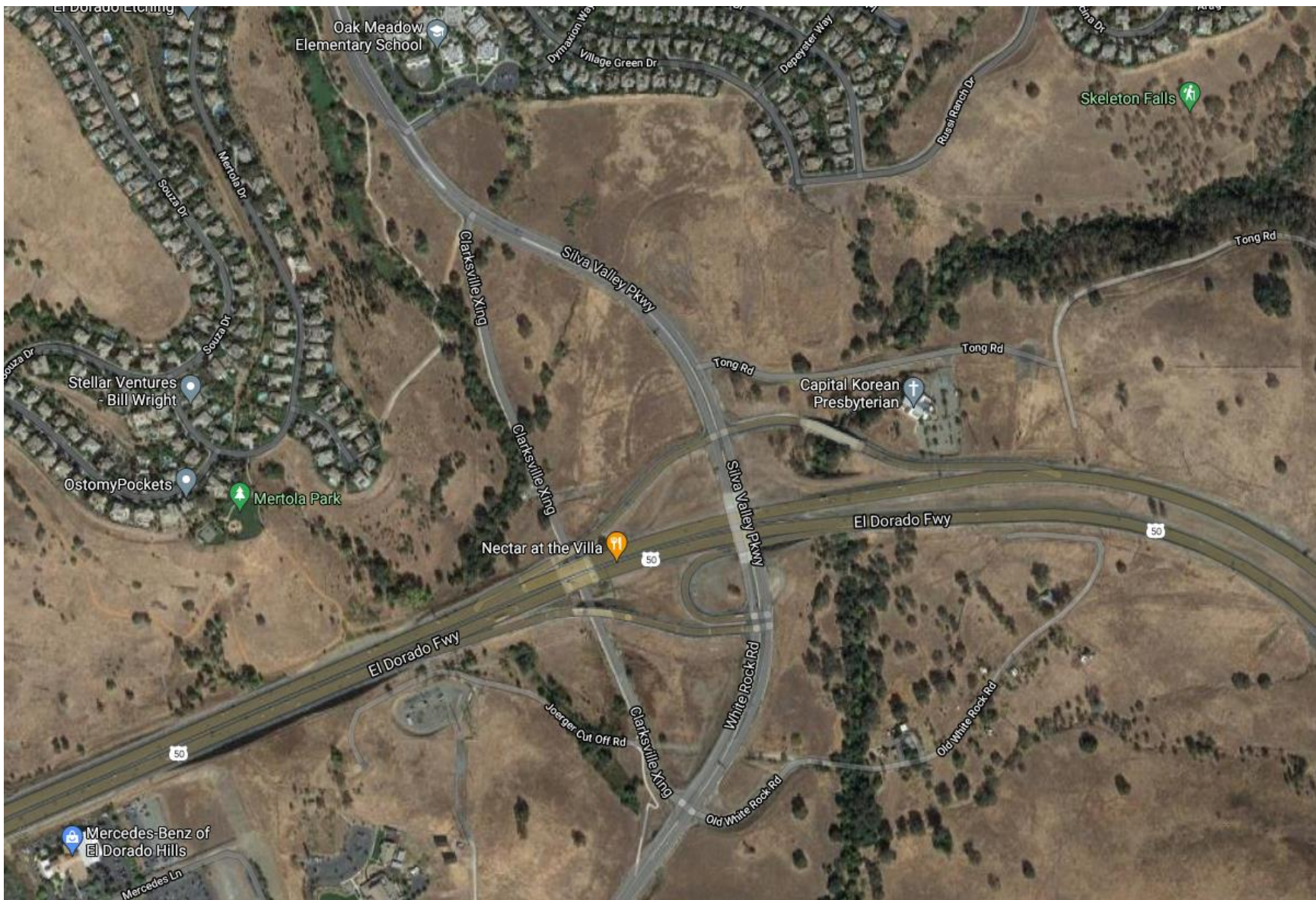

 DB+A ENGINEERING, INC.
 10000 SILVERADO DRIVE
 SUITE 100
 SACRAMENTO, CALIFORNIA 95828
 WWW.DB+A.COM

DBA # P.290

DB+A
 CIVIL ARCHITECTURE + LANDSCAPE ARCHITECTURE
 10000 SILVERADO DRIVE, SUITE 100
 SACRAMENTO, CALIFORNIA 95828
 WWW.DB+A.COM



EDH Costco – EDH 52 Commercial Development





8. Adjournment

Next EDH APAC Meeting

Wednesday
September 8, 2021
7PM

