

January 8, 2019

County of El Dorado Board of Supervisors
330 Fair Lane
Placerville, CA 95667

RE: CPU18-0005/Quantum Care Place Revised Site Plan and Withdrawal of Appeal

Dear County Supervisors:

On October 11, 2018 the Capital SouthEast Connector Joint Powers Authority (the "Connector") submitted an appeal regarding the El Dorado Planning Commission's approval of the Conditional Use Permit, File Number CUP18-0005, application submitted by Quantum Care Place EDH, LLC ("Quantum"). Since filing of the appeal, the Connector, Quantum and El Dorado County staff have worked to resolve all concerns related to the appeal and Quantum and the Connector have agreed upon the revised site plan enclosed herein (the "Site Plan").

The Connector hereby agrees to rescind and withdraw its October 11, 2018 appeal subject to the El Dorado County Planning Director's approval of the Site Plan. We would like to thank El Dorado County staff for their efforts and commitment to resolving this matter.

Sincerely,



Derek Minnema
Executive Director
Capital SouthEast Connector JPA

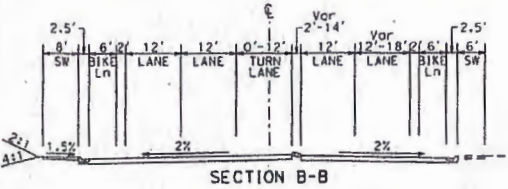
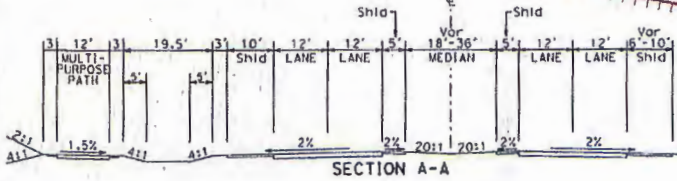
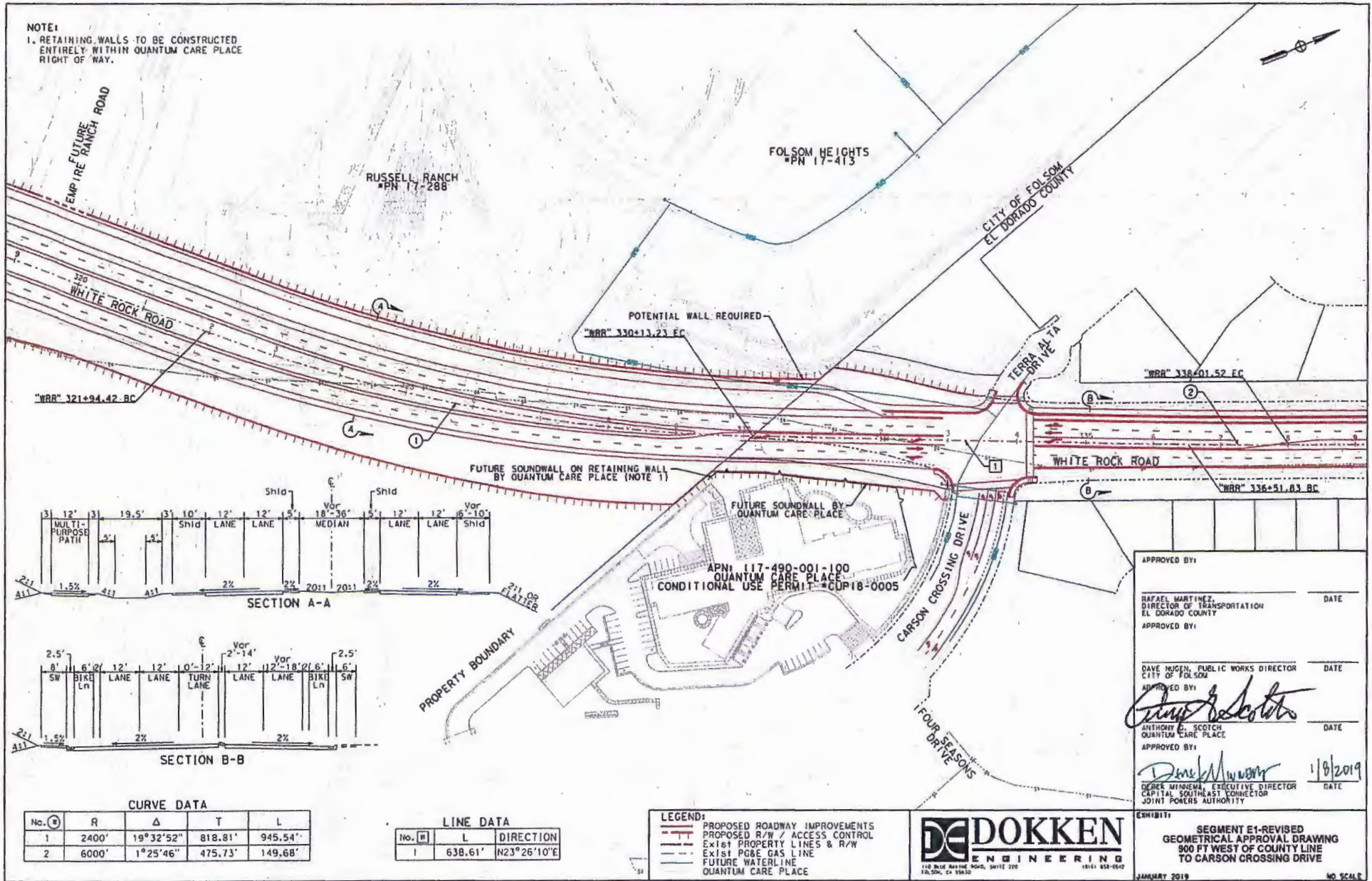
Sincerely,



Anthony Scotch
Director of Development
Quantum Care Place, EDH

Enclosure

NOTE:
 1. RETAINING WALLS TO BE CONSTRUCTED ENTIRELY WITHIN QUANTUM CARE PLACE RIGHT OF WAY.



CURVE DATA				
No.	R	Δ	T	L
1	2400'	19°32'52"	818.81'	945.54'
2	6000'	1°25'46"	475.73'	149.68'

LINE DATA			
No.	PI	L	DIRECTION
1		638.61'	N23°26'10"E

- LEGEND:**
- PROPOSED ROADWAY IMPROVEMENTS
 - PROPOSED R/W / ACCESS CONTROL
 - EXIST PROPERTY LINES & R/W
 - EXIST PGE GAS LINE
 - FUTURE WATERLINE
 - QUANTUM CARE PLACE

DE DOKKEN
 ENGINEERING
 110 BLUE MARINE ROAD, SUITE 200
 FOLSOM, CA 95630

APPROVED BY: _____ DATE _____

RAFAEL MARTINEZ, DIRECTOR OF TRANSPORTATION
 EL DORADO COUNTY

APPROVED BY: _____ DATE _____

DAVE HUGEN, PUBLIC WORKS DIRECTOR
 CITY OF FOLSOM

APPROVED BY: *Anthony E. Scotch* DATE _____

ANTHONY E. SCOTCH, QUANTUM CARE PLACE

APPROVED BY: *Debra Minerva* DATE 1/8/2019

DEBRA MINERVA, EXECUTIVE DIRECTOR
 CAPITAL SOUTHEAST CONNECTOR
 JOINT POWERS AUTHORITY

EXHIBIT: SEGMENT E1-REVISED GEOMETRICAL APPROVAL DRAWING 900 FT WEST OF COUNTY LINE TO CARSON CROSSING DRIVE

JANUARY 2019 NO SCALE