

OWNER / DEVELOPER

DAVE KINDELT
 SUPERIOR STORAGE GROUP
 4120 DOUGLAS BLVD. - SUITE 306-504
 GRANITE BAY, CA 95746
 PHONE: 916-789-0500
 E-MAIL: dave@superiorstoragegroup.com

ARCHITECT

ARIEL L. VALLI
 VALLI ARCHITECTURAL GROUP
 27405 PUERTA REAL, SUITE 235
 MISSION VIEJO, CA 92691
 PHONE: 949-813-4191
 E-MAIL: ariel@valliarch.com

LANDSCAPE ARCHITECT

SCOTT VOLMER
 GREAT VALLEY DESIGN, INC
 1219 SPRUCE LANE
 DAVIS, CA 95616
 PHONE: (530) 792-7095
 E-MAIL: svolmer@grtvalley.com

PROJECT DATA

EXISTING BUILDING

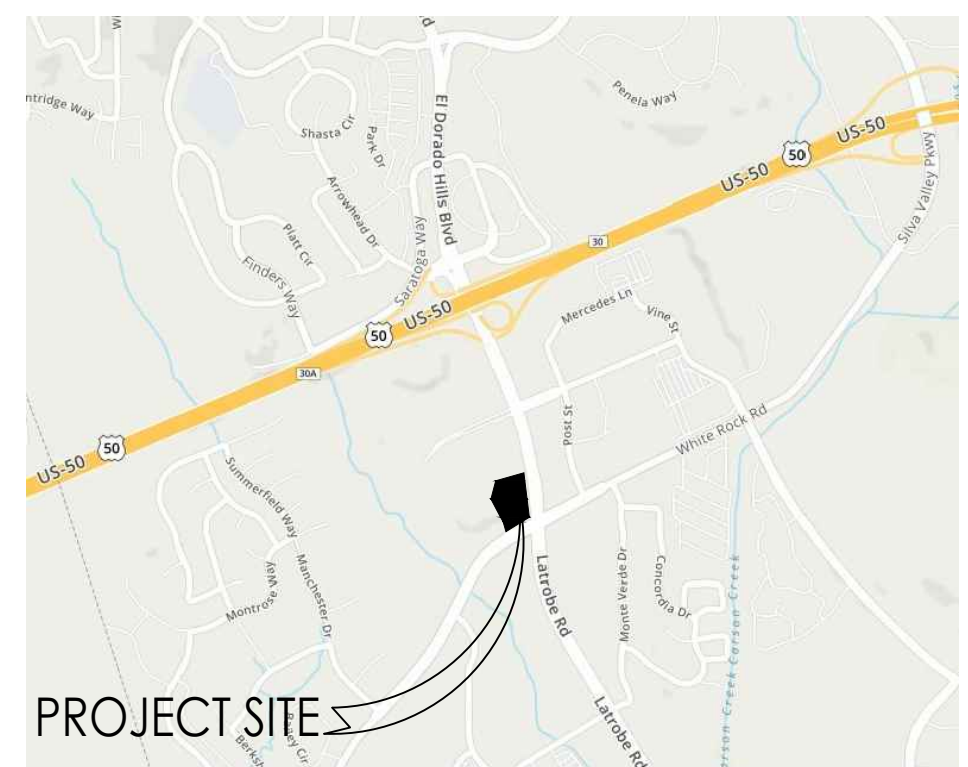
EXISTING BUILDING	
AREA 'A'	73,073 SQ. FT.
AREA 'B'	5,131 SQ. FT.
AREA 'C'	8,111 SQ. FT.
AREA 'D'	3,155 SQ. FT.
PHASE I TOTAL	89,470 SQ. FT.
PHASE II ADDITION	22,800 SQ. FT.

TOTAL PROJECT 112,270 SQ. FT.

PARKING SPACES

(EXISTING)

(2) ACCESSIBLE
(32) STANDARD
(34) TOTAL



VICINITY MAP

SUPERIOR SELF STORAGE CONVERSION

EL DORADO HILLS, CA

PHASE II SITE PLAN

9/14/2018

SCALE: 1" = 50'-0"

