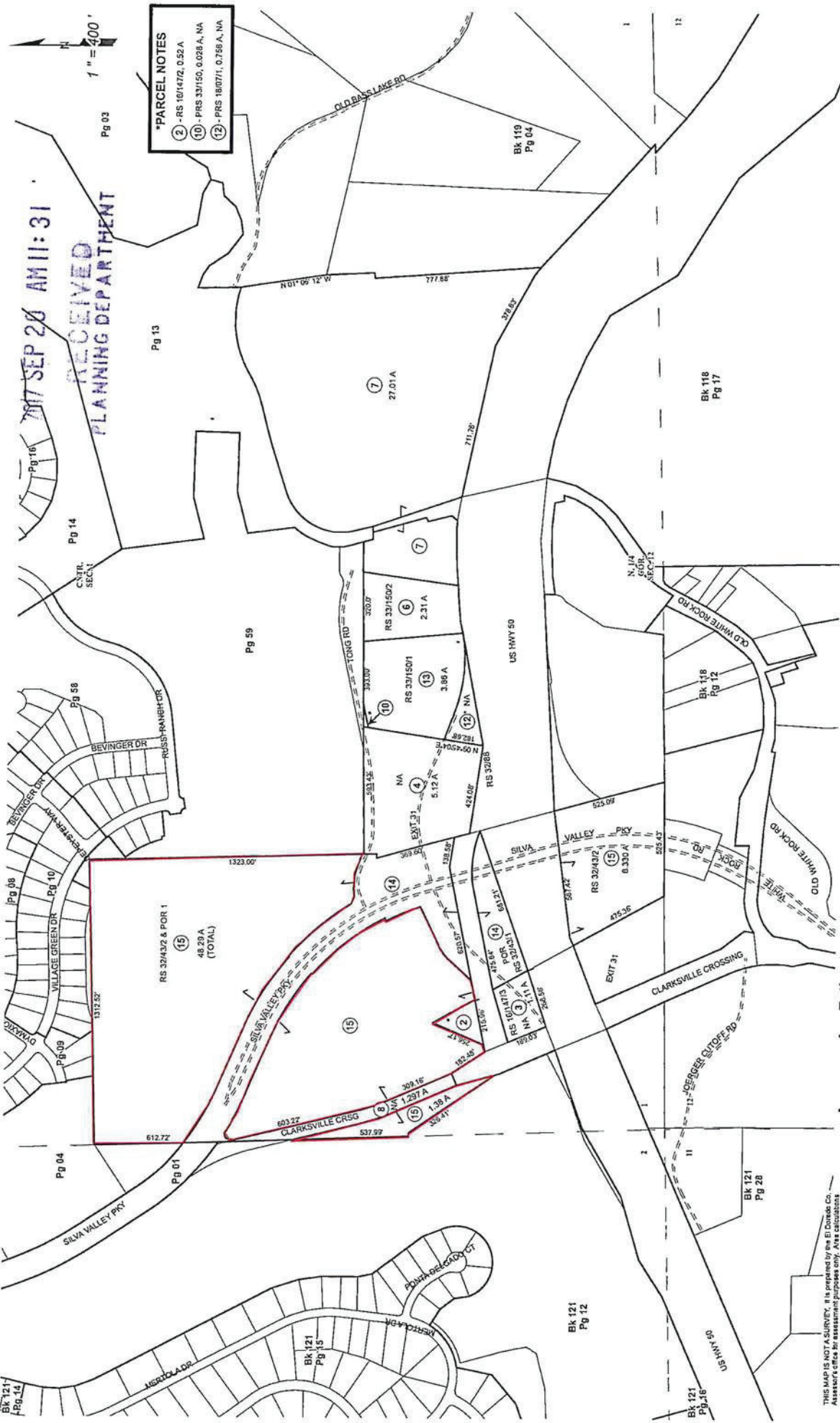


POR. SEC. 1, T.9N., R.8E., M.D.M.

122:72



***PARCEL NOTES**
 (2) - RS 161472, 0.52 A
 (10) - PRS 33150, 0.028 A, NA
 (12) - PRS 180771, 0.758 A, NA

RECEIVED
 SEP 28 AM 11:31
 PLANNING DEPARTMENT

THIS MAP IS NOT A SURVEY. It is prepared by the El Dorado Co. Assessor's office for assessment purposes only. Area calculations are based on the best available information. Users should verify items such as dimensions and acreage.

Acreages Are Estimates

Adjacent Map Pages Shown in Grey Text. Assessor's Parcel Numbers Shown in Black.

Rev. JUL 28, 2016

Assessor's Map Bk. 122 - Pg. 72
 County of El Dorado, CA

P 17-0004